

Canvas Class- Submit An Assignment in Canvas

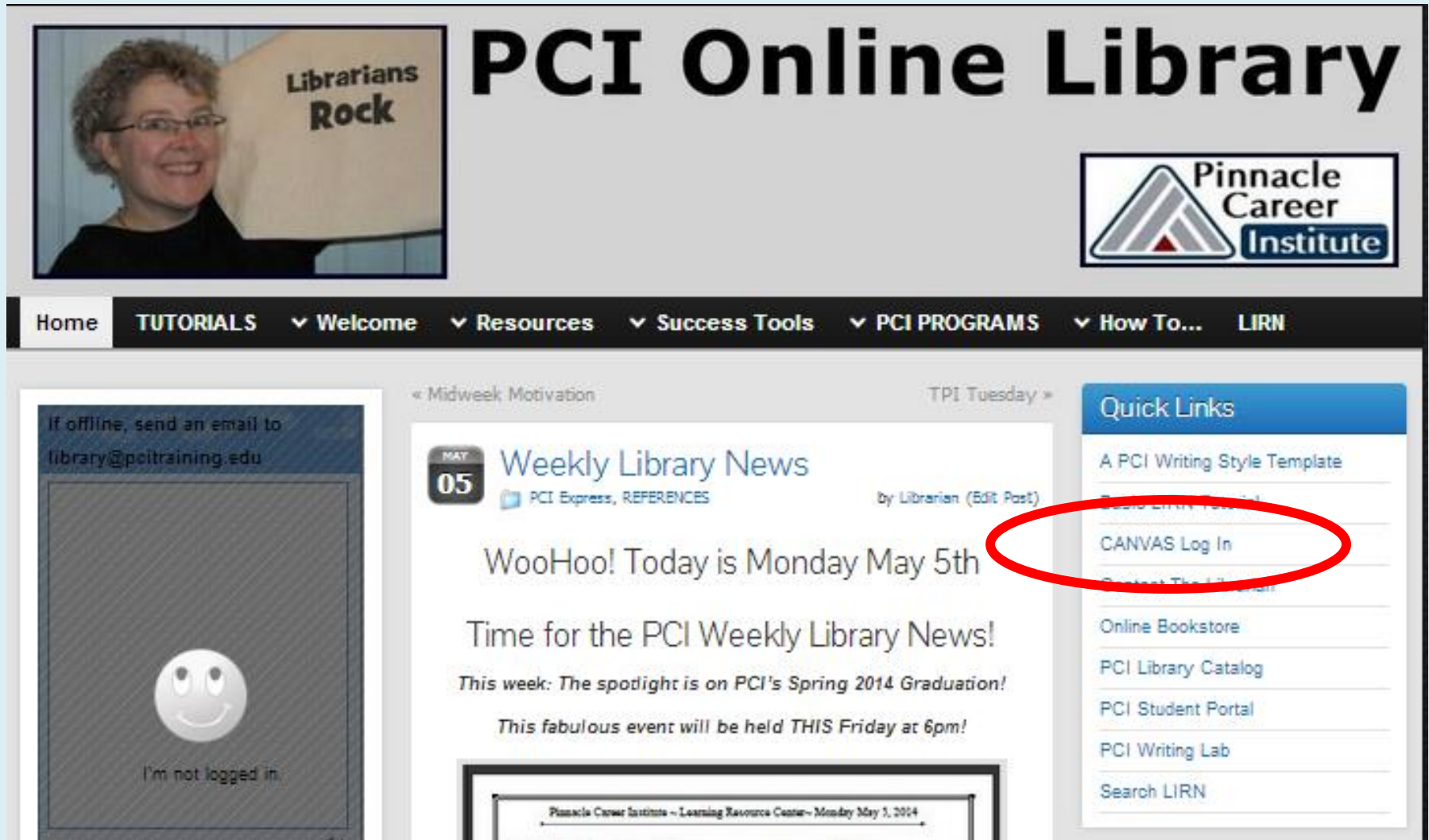
Spring 2014

By- PCI Librarian



Log in to Canvas from Library website:

www.pinnacleapps.com/library



The screenshot shows the PCI Online Library website. At the top left is a photo of a woman with glasses and a sign that says "Librarians Rock". To the right is the "PCI Online Library" title and the "Pinnacle Career Institute" logo. Below this is a navigation bar with links: Home, TUTORIALS, Welcome, Resources, Success Tools, PCI PROGRAMS, How To..., and LIRN. The main content area features a "Weekly Library News" post dated May 5th, with the text "WooHoo! Today is Monday May 5th" and "Time for the PCI Weekly Library News!". A red circle highlights the "CANVAS Log In" link in the "Quick Links" sidebar on the right. On the far left, there is a login status box that says "I'm not logged in" with a smiley face icon.

Librarians Rock

PCI Online Library

Pinnacle Career Institute

Home TUTORIALS Welcome Resources Success Tools PCI PROGRAMS How To... LIRN

« Midweek Motivation TPI Tuesday »

if offline, send an email to library@pcitraining.edu

I'm not logged in.

MAY 05 Weekly Library News
by Librarian (Edit Post)

WooHoo! Today is Monday May 5th

Time for the PCI Weekly Library News!

This week: The spotlight is on PCI's Spring 2014 Graduation!
This fabulous event will be held THIS Friday at 6pm!

Quick Links

- A PCI Writing Style Template
- CANVAS Log In**
- Online Bookstore
- PCI Library Catalog
- PCI Student Portal
- PCI Writing Lab
- Search LIRN

Pinnacle Career Institute - Learning Resource Center - Monday May 5, 2014

Use your email & password



Pinnacle Career **Institute**™



canvas

name@emailhere

Stay signed in

[Don't know your password?](#)

Log In

Open your assignment page

Pinnacle Career Institute khatch@pcitraining.edu

Courses ▾ Assignments ▾ Grades Calendar

GS100 (4.7.14) 🏠 > GS100 (4.7.14) > Assignments > Assignment 1.3 - Time Management (Online)
C 07 APR 2014 MOD

Home
Announcements
Modules
Syllabus
Grades
People

Assignment 1.3 - Time Management (Online)

Due Apr 13 by 11:55pm **Points** 100
Submitting a text entry box, a website url, a media recording, or a file upload

Time Management

Please answer the following questions. Your response should reflect the [PCI ASSIGNMENT SUBMISSION](#) guidelines and must be submitted as a Word document.

Description: In this activity, you will track the amount of time you spend weekly on various activities, and then evaluate your use of time by completing the Assignment 1.3 Activity.

Points Possible: 100


Required Materials or Reading:

Internet Sites: Time Management

- [Why Is Time Management Important?](#)
- [Overview of Time Management Systems](#)
- ["Zen to Done"](#)
- [Time Management Tune Up](#)

Student Instructions:

1. Read the assigned internet articles.
2. Open and complete the following template according to its directions.
 - a. [Time Management Activity](#)
3. Once you have completed your Assignment 1.3 activity, upload your answers to the online classroom for your instructor to review. Remember to use a standard file name - Example: jbrown_GS100_W1A3.docx



Click on Submit Assignment to start

🏠 > GS100 (4.7.14) > Assignments > Assignment 1.3 - Time Management (Online)

Assignment 1.3 - Time Management (Online)

Due Apr 13 by 11:55pm **Points** 100
Submitting a text entry box, a website url, a media recording, or a file upload

Time Management

Please answer the following questions. Your response should reflect the [PCI ASSIGNMENT SUBMISSION](#) guidelines and must be submitted as a Word document.

Description: In this activity, you will track the amount of time you spend weekly on various activities, and then evaluate your use of time by completing the Assignment 1.3 Activity.

Points Possible: 100


Required Materials or Reading:

Internet Sites: Time Management

- [Why Is Time Management Important?](#)
- [Overview of Time Management Systems](#)
- ["Zen to Done"](#)
- [Time Management Tune Up](#)

Student Instructions:

1. Read the assigned internet articles.
2. Open and complete the following template according to its directions.
 - a. [Time Management Activity](#)
3. Once you have completed your Assignment 1.3 activity, upload your answers to the online classroom for your instructor to review. Remember to use a standard file name - Example: jbrown_GS100_W1A3.docx



+ Submit Assignment

Submit Assignment is on the upper right side of the page.

A new box will open up

[NEED HELP SUBMITTING THIS ASSIGNMENT?](#)



File Upload

Text Entry

Website URL

Google Doc

Media

Upload a file, or choose a file you've already uploaded.

File: No file chosen

 Add Another File

[Click here to find a file you've already uploaded](#)

Comments...

Cancel

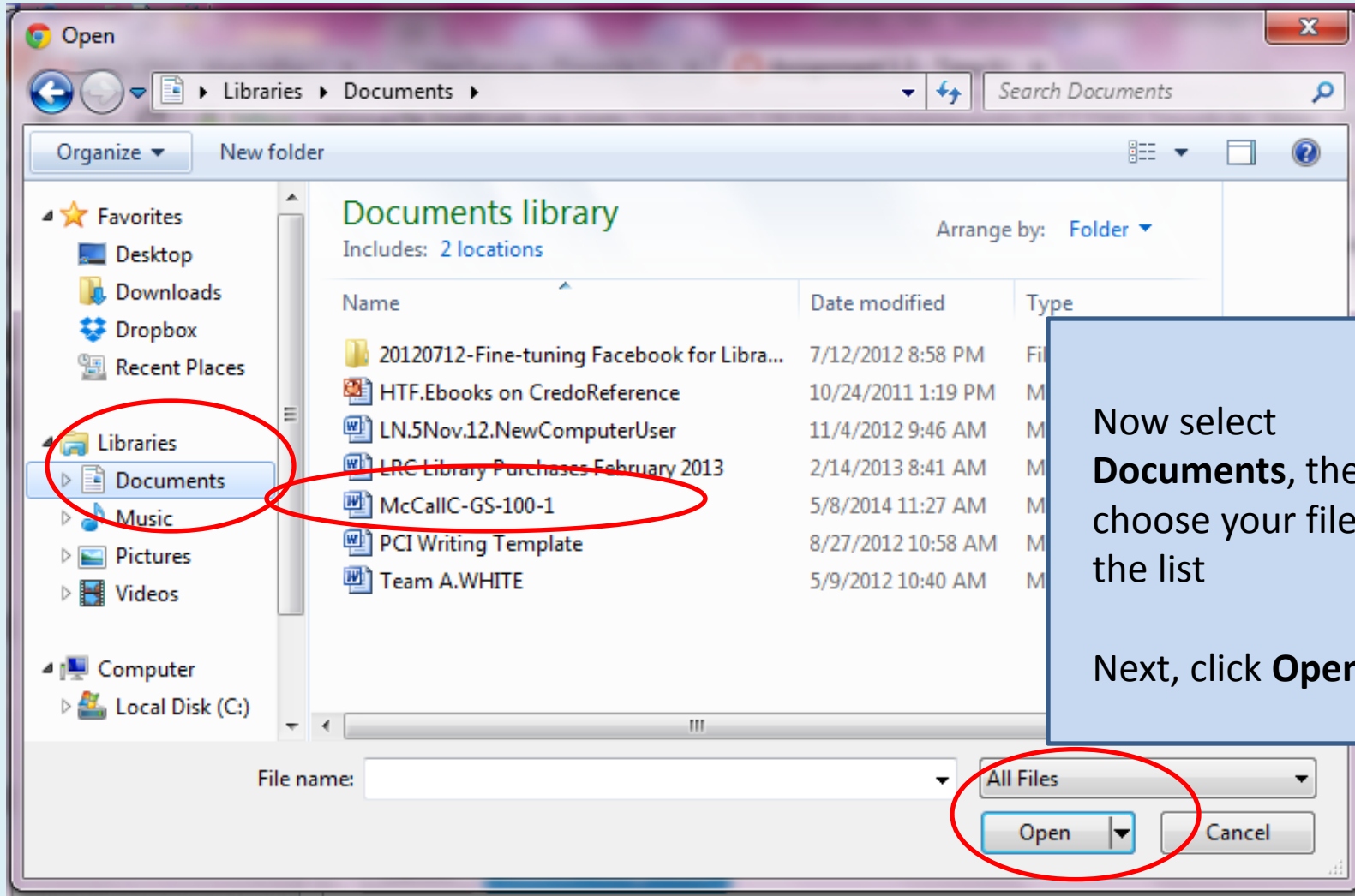
Submit Assignment

◀ Previous

Assignment 1.2 - Inte...

- Click **Choose File**

A new window will open up



Now check that you have the right file

File Upload | Text Entry | Website URL | Google Doc | Media

Upload a file, or choose a file you've already uploaded.

File:

[+ Add Another File](#)
Click here to find a file you've already uploaded

Click Submit Assignment when you are ready

[◀ Previous](#)
Assignment 1.2 - Inte...

[Next ▶](#)
Quiz 1 (Online)

[see full course sequence](#)

Double check your submission here

Assignment 1.3 - Time Management (Online)

Due Apr 13 by 11:55pm

Points 100

Submitting a text entry box, a website url, a media recording, or a file upload

Time Management

Please answer the following questions. Your response should reflect the [PCI ASSIGNMENT SUBMISSION](#) guidelines and must be submitted as a Word document.

Description: In this activity, you will track the amount of time you spend weekly on various activities, and then evaluate your use of time by completing the Assignment 1.3 Activity.

Points Possible: 100

Required Materials or Reading:

Internet Sites: Time Management

- [Why Is Time Management Important?](#)
- [Overview of Time Management Systems](#)
- ["Zen to Done"](#)
- [Time Management Tune Up](#)

Student Instructions:

1. Read the assigned internet articles.
2. Open and complete the following template according to its directions.
 - a. [Time Management Activity](#)
3. Once you have completed your Assignment 1.3 activity, upload your answers to the submission box. Remember to use a standard file name - Example: jbrown_GS100_W1A3.doc

Evaluation: Graded by the instructor

Due: Sunday

Submission

✓ **Turned In!**

May 8 at 1:10pm (late)

📎 [Submission Details](#)

Download McCallC-GS-100-1.doc

Comments Comments

⊕ [Re-submit Assignment](#)

Scroll to the top of the page. This box will tell you the day, time and which file you turned in.

Thanks!



- Questions? You can get help from:
- A classmate in the Student Lounge
- Your Instructor
- Your Student Success Coordinator
- The Librarian